



940 W. 1400 N. Logan, UT 84321
 E-mail: info@transchill.com
 Phone: +1 (435) 754-7875
 Web site: www.transchill.com

TGC-100™

TGC-100™ - TransChill's Global Connect-100 utilizes highly reliable Seimens's 3G/LTE secure gateway and platform which connects with TransChill's data servers and includes:

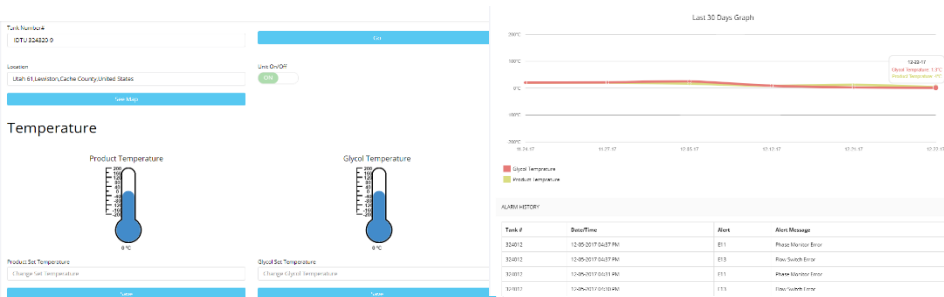
- ✓ GPS (Satellite location) functionality.
- ✓ Mapping and Reefer status with a single click.
- ✓ Unit on/off status.
- ✓ Alarm logs.
- ✓ Real time control of product set temperature.
- ✓ TGC-100 web dashboard with instrumentation.
- ✓ User defined product temperature update alerts.
- ✓ Automatic system alerts via SMS or Email to multiple users.
- ✓ Graphical 30-day log of product and glycol temperatures.
- ✓ Optional remote pre-trip and maintenance history.
- ✓ Mobile App functionality for Apple and Android.

Transchill.com is an online service for TransChill reefer products.

TransChill – “Raising the bar”

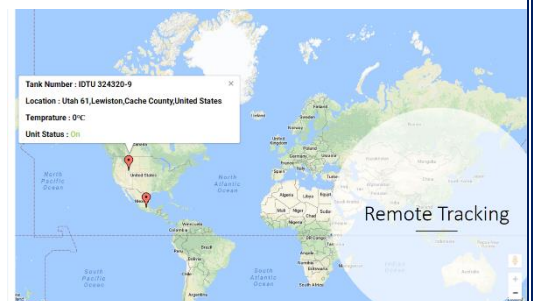
| Tank Number | Location | City | State | Country | Unit Phone Number# | Product Temperature | Glycol Temperature | Unit On/Off | Maintenance Due | Last Checked | Actions |
|---------------|--|-------------------|--------------|---------------|--------------------|---------------------|--------------------|-------------|-----------------|--------------|---------|
| IDTU 324012 | 649,Sur 99-A,Popular,Iztapalapa | 649,Sur 99-A | Popular | Iztapalapa | +15442562739 | 22.8°C | 23.5°C | ON | 07-24-2019 | 01-25-2017 | |
| IDTU 324320-9 | Utah 61,Lewisston,Cache County,United States | Utah 61,Lewisston | Cache County | United States | +15442562672 | 0°C | 0°C | ON | No Data | No Data | |

Search Record



Individual Unit Instrumentation

Product/Glycol Temp. Log
Alert/Alarm History



Map & Unit Summary

For technical assistance, email: bhargava@transchill.com or call: +1(435) 757-4546